



MIXMOVE

Enlightening Logistics

Berlin, 13 October 2021



IPIC 2017

IPIC 2019

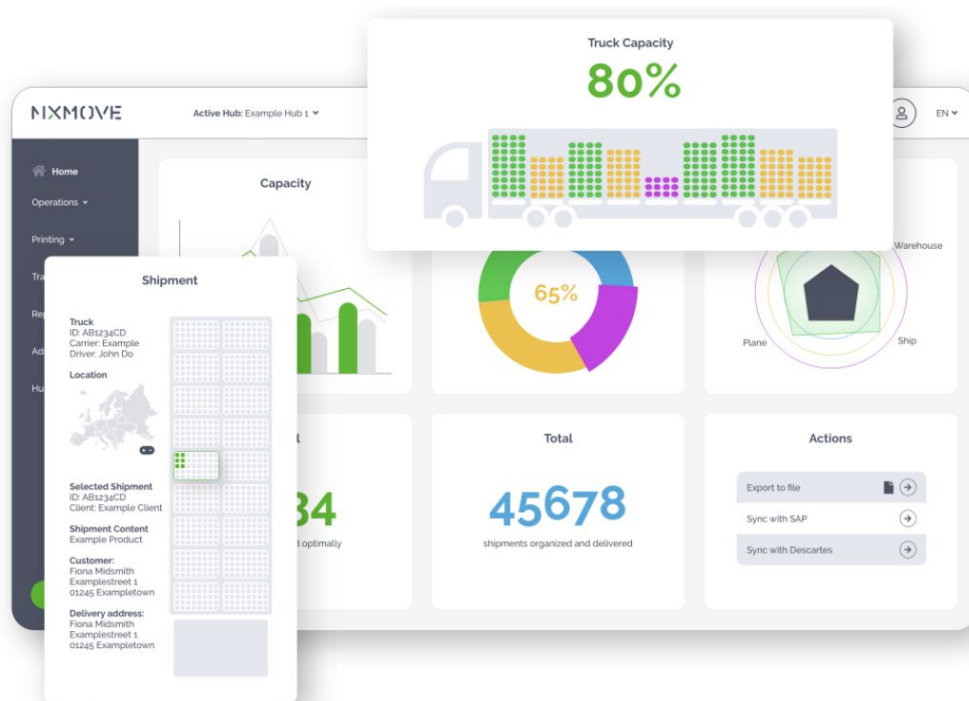
Gartner

COOL
VENDOR
2019

MIXMOVE

An award winning collaborative cloud platform enlightening logistics data, all with the aim of making logistics processes connected, efficient, and sustainable.

- **Norwegian based** company established 2017, subsidiary in Portugal.
- Provides **one cloud solution** that revolutionizes the loading of goods.
- Making logistics processes **efficient**, **connected** and **sustainable** without time-consuming and costly changes.



5 Challenges in the Logistics Industry

1. **Insufficient computerisation** that result in costly manual processes, missed opportunities to implement new ideas and unexploited data
2. **Underutilisation of assets** due to low level of shipment consolidation and idle return trips, Increased CO2 Emissions
3. **Traditional practices**, such as linear shipment chains or indivisible pallets that offer little room for optimisation
4. **Low resilience** during periods of disruption, transport restrictions and emergency
5. **Lack of collaboration** between service providers due to a distrust and high competition in the industry

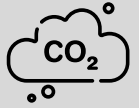
High Fragmentation & Low Transparency



52%
Average
Truck Fill
Rate



43%
Digitisation in
Average Supply
Chain



**400
million**
Tonnes of
CO2
Emissions

Low Resilience & Flexibility

Logistics Status Quo

When it comes to logistics, most companies are stuck in the dark. They use SILO based applications that only offer a one-dimensional view.

MIXMOVE is the world's first Logistic Cloud Platform which **connects all data silos, unite teams** and **automates processes** for multi-enterprise transparency on **parcel level.**

Lights on, for your unleashed superpower

Visibility Power

One dashboard of truth, with all the data from partners and resources to control every events along your logistics.

Achieve unprecedented real-time visibility of products, assets and partners, leverage your capacities in the most effective way and benefit from new insights of your logistic network.

Product-Level Power

Gain the ability to deliver **on time and in full, by knowing on product level**, how to manage logistic flows in the best possible way.

Know what you expect on inbound in order to deliver immediately on e-commerce standards, track and predict the location and condition of any product at any time, and ship goods at a competitive speed.

Optimization Power

MIXMOVE algorithms determine **cost-efficient planning and execution** of your partners, transport modes and resources.

It allows you to optimize the utilization of all transport resources in the a sustainable way, increase the warehouse throughput, and speed up your flow of goods.

MIXMOVE LIGHTHOUSE

MIXMOVE



MIXMOVE LIGHTHOUSE is an interactive cloud platform on top of your existing infrastructure (TMS, WMS, ERP) designed to work with all logistic applications and partners.

LIGHTHOUSE allow teams to manage, predict and analyze every logistic event on product level in the best possible way, no matter where it comes from.

All with the aim of making logistics processes efficient, connected and sustainable without time-consuming and costly changes.

Logistics superpower

-35 %

reduced logistic costs

+90 %

maximum transport
fill rate

+100 %

ecommerce shipping
standard

-50 %

CO2 emission



Production

- **Automated bookings** of logistic service providers and carriers electronically (API / EDI / E-Mail / Digital Twin)
- **Labeling and traceability** of goods (Products, Cartons, Pallets, Containers, Vehicles)

Planning & Loading

- **All modes of transport are used and combined** intelligently (own fleet or subcontracts)
- **Maximum transport fill rate**
- **MCC - Multi country consolidation**
- **Grow without additional resources** like drivers & containers
- **Multimodal optimisation**
- **Modular road transport**
- Increased use of **rail and waterborne**
- Using **cargo bikes, robots, and other vehicles**

Transport

- **Control and manage** products, parcels and containers in real-time including proof of delivery
- **Predict delivery times** down to the minute
- **Dynamically make changes** when unexpected events occur
- **In transit fulfillment**
- **Faster customs clearance** by knowing all product properties

Warehouse throughput

- **Highest efficiency in sorting and consolidation** processes
- **Traceability of all resources** such as loads, items and containers
- **Automated in- and outbound movement** of goods
- **Fulfillment by** Amazon, Self-Fulfillment, FBM, SFP

Road Transport Fleet (Last Mile) & return

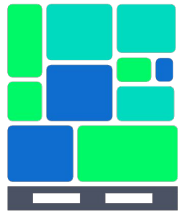
- Dynamic and static last mile **delivery planning**
- **Routing and control of all deliveries**, drivers and performances
- **Use of "zero-emission city"** distribution solutions
- **Optimized, consolidated freight flows** on the last mile
- **Analyze and evaluate** all driver data,
- Customer **Track & Trace**
- Efficient **tracking and return** of products and containers

Chaotic Loading - Cross docking

Collective order picking



Chaotic loading allow you to load goods to the maximum



Deconstruction



Handover to transport mode



Spot the ITEM

Get visibility on item level of shipments. This opens up the dynamics and agility required for e-commerce types of flows.

**No workarounds!
No huge IT changes
needed!**

**Forecast delivery
times down to
the minute.**

+ 100% new customer potential

-50% CO2
Your company-specific targets for reducing emissions are achieved more quickly.

+90%
Increase your transport fill rates based on existing resources and capacities to the maximum.

-35%
Reduce transport costs by filling loads to the maximum.

Immediate Success
The award-winning platform seamlessly connects all of your daily-use systems, like ERP, WMS and TMS and supplements it with fine-granular information on an item level.

MIXMOVE's solution has significant impact

3M



- Up to 165% increase in fill rate
- Up to 50% reduction in carbon footprint
- Up to 35% reduction in logistics costs
- Up to 30% reduction in freight charges
- Up to 25% increase in forecasting accuracy
- Up to 20% reduction in inventory cost
- Up to 10% reduction of the workforce
- Increased customer satisfaction



- Up to 137% increase in productivity
- Up to 50% reduction in hub space
- Up to 90% reduction in emergency hiring



- Up to 15% reduction in distances travelled
- Up to 167% increase in truck fill rates
- Up to 50% reduction in carbon footprint
- Increased management capabilities
- Increased margins
- Increased customer satisfaction



Thank you for your attention!

For any further information regarding our innovative solution, please contact:

Mr. Arjan Kerkhoff

Sales Director

E: arjan@mixmove.io

W: www.mixmove.io

