

4flow – “S/4HANA Transformation - the right way!”

Logistics Summit 2021 – Master Class

Berlin, October 14, 2021





700+

team members  
globally

200+

projects annually  
around the world

300+

customers globally

2000

year of foundation

18

offices in Europe,  
Asia, North America  
and South America

100%

management-owned



**4flow**  
Your supply  
chain solution

# Our business model

## Supply chain consulting, software and services

---



Supply chain  
consulting

4flow consulting



Supply chain  
software

4flow software



Supply chain  
services

4flow management



Supply chain research

4flow research

# 4flow customers (extract)

## Globally leading companies across all industries

### Vehicle manufacturers



### Automotive suppliers



### Consumer goods



### Retail



### Machinery manufacturers



### Renewable energy



### Packaging



### Basic materials industry



### Pharmaceuticals & medical tech



### High-tech/Telecommunications



### Logistics service providers





# Supply chain management S/4HANA transformation

## Strategic transformation principles



### Think customer-centrally, not from the outside

- › Challenge the status quo for added value for customers and end-users
- › Make customer and end-user experience digital
- › Enable new business models by understanding customer needs beforehand



### Think process redesign for results, not for its own sake

- › Process redesign must focus on maximizing value generation
- › Governance must focus on harmonization and standardization and a return to SAP standard
- › Holistic, company-wide master data concept across organizational boundaries



### Think end-to-end, not functionally

- › Biggest simplification potential lies in-between silos, not in local optimization
- › End-to-end process organization as key to operational excellence



### Think digitally, not traditionally

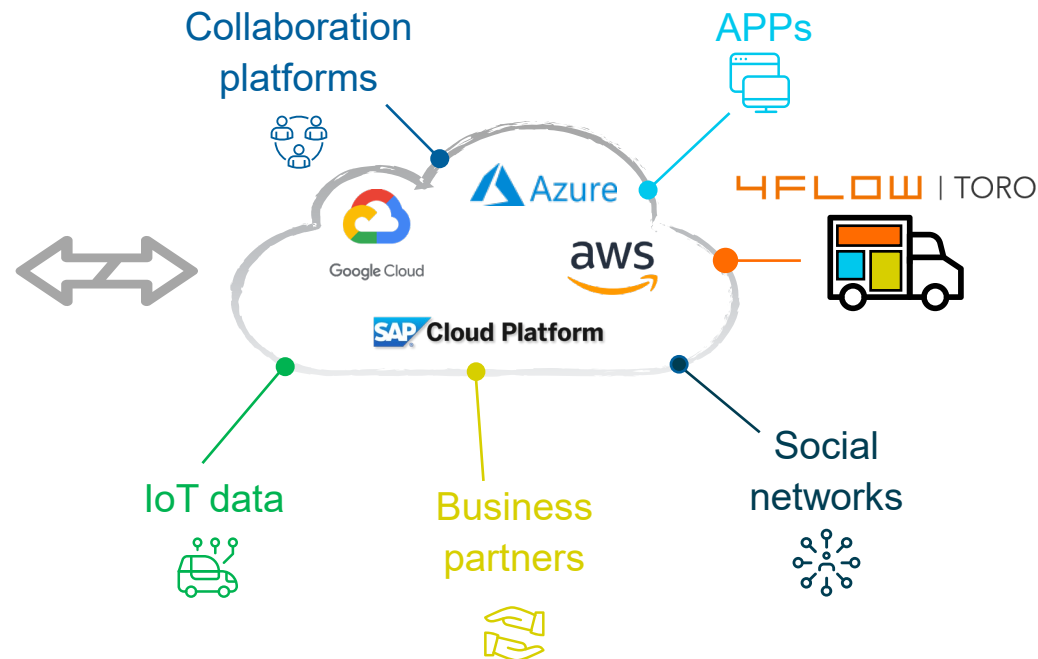
- › Rethink traditional processes reflecting state of the art digital technologies
- › Leverage digital innovations by using hybrid cloud concept

# Supply chain management S/4HANA transformation

## Accelerate innovation with digital core and hybrid cloud



- > Core enterprise applications for environments that are predictable and well understood
- > Transform the legacy into a state that is fit for a digital world



- > Open, innovation platform for addressing the challenge of digital transformation.
- > Enables exploratory experimentation to enable innovation and is optimized for areas of uncertainty

Intelligent enterprise

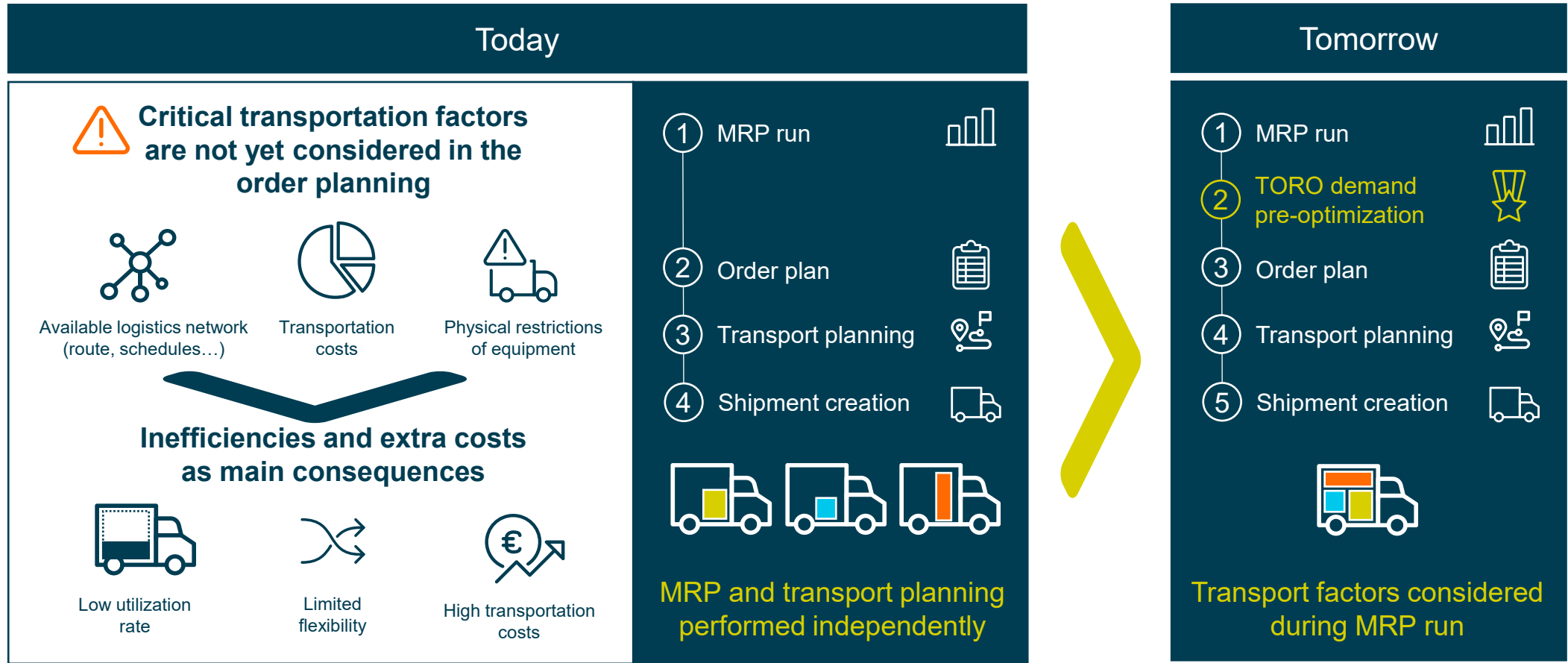


Stable core  
Agile business  
Faster innovation

# 4flow TORO as the next generation of MRP solutions – MRP X.0

## Non-realization of cost saving potentials is a major pain point

4FLOW | TORO



# Tackle the challenges on the market with the out-of-the-box solution

## 4flow TORO as enabler

4FLOW | TORO



### Cost savings

- › Reduced transportation costs by bundling several orders
- › Minimizing number of shipments
- › Visualization of total shipment costs



### Flexibility

- › Adaptable optimization scope for specific lanes and materials
- › Plug-and-Play solution
- › Enabling cost savings without requiring active transportation management

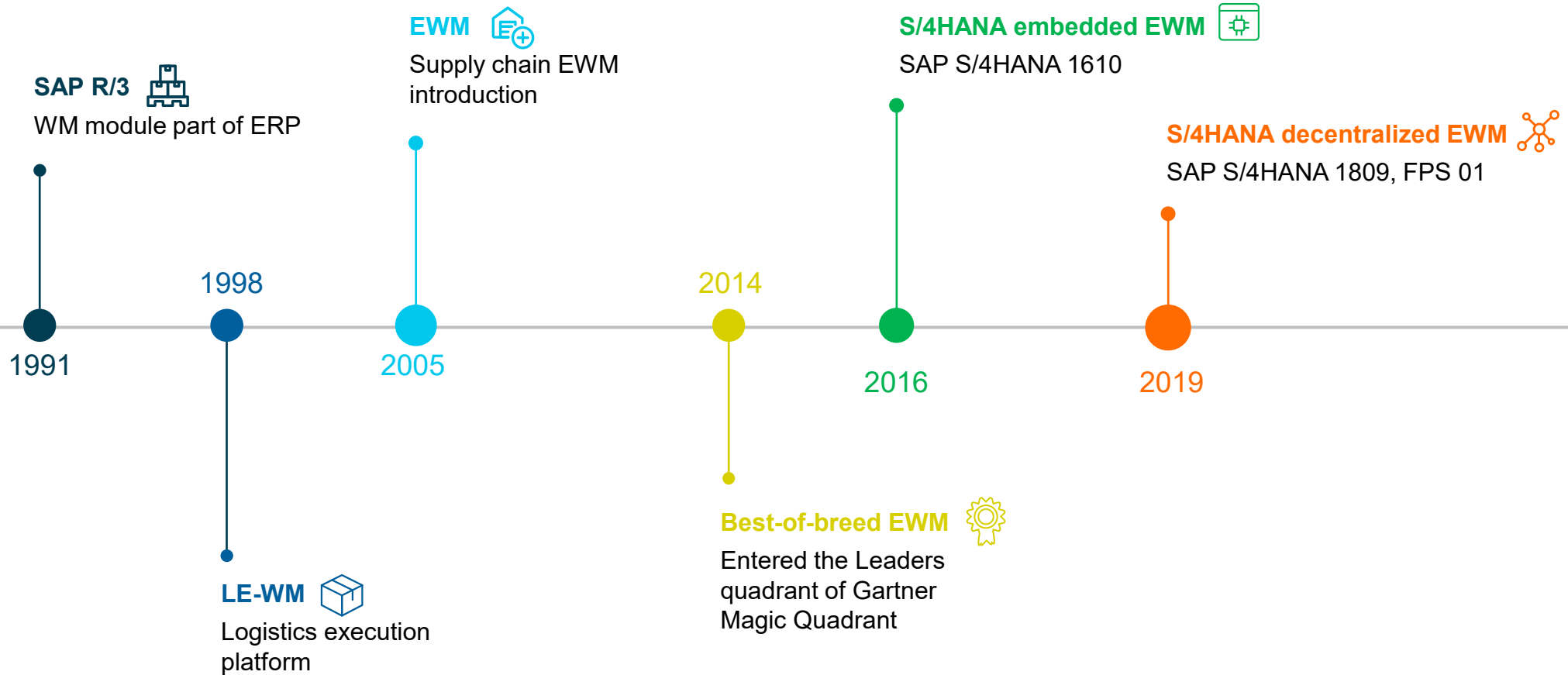


### Transparency

- › Approval function for the user
- › Better overview before and after pre-optimization
- › Integration of material and transport planning
- › Feasibility of results



# SAP warehouse management History

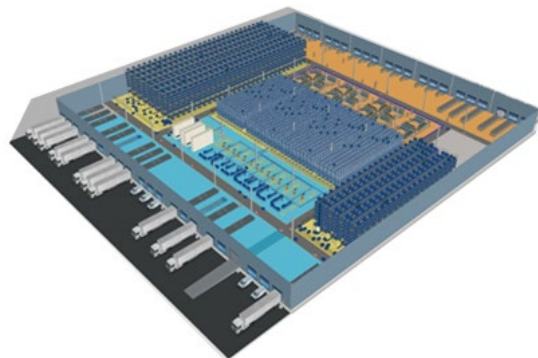


# SAP S/4HANA extended warehouse management

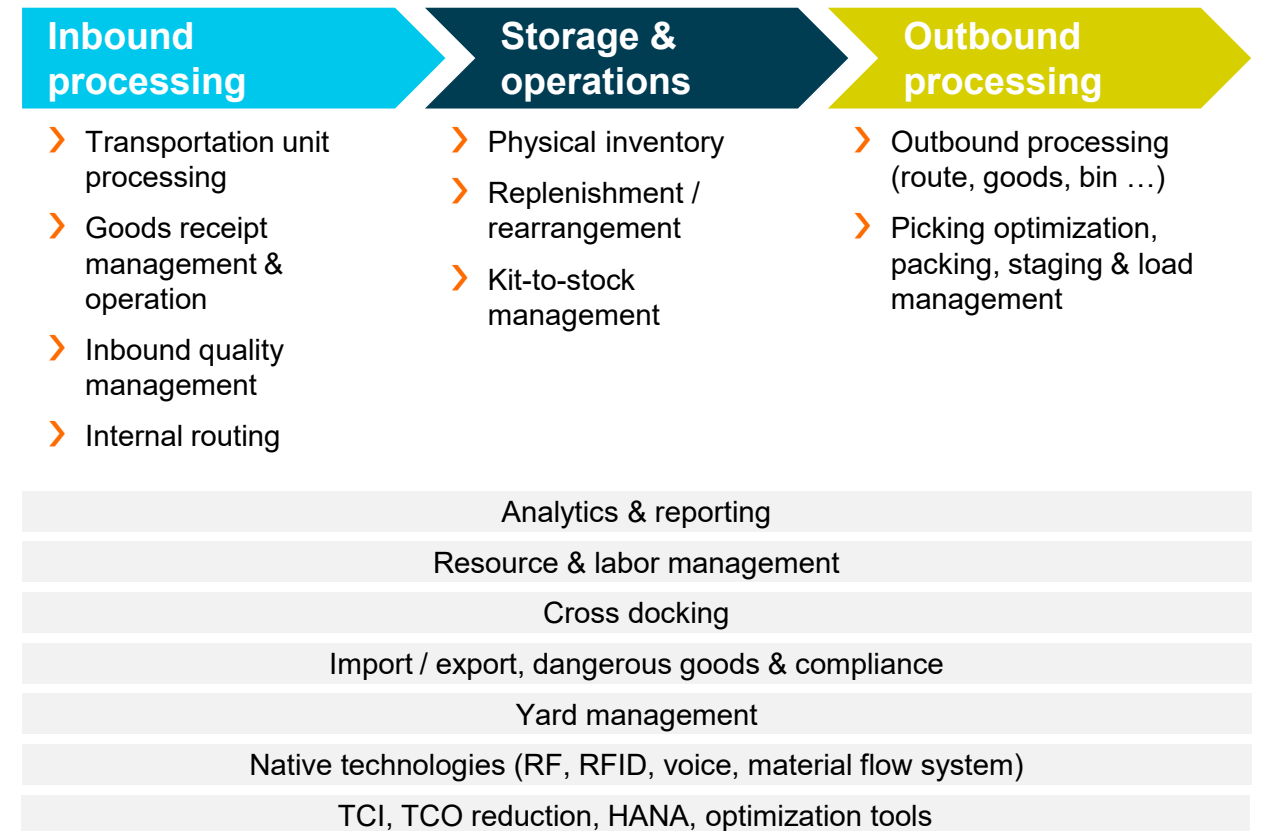
## Warehousing at a glance ...

### Features

- › Storage bin management and optimization
- › Goods movement
- › Work center
- › Physical inventory
- › Planning and monitoring
- › Radio frequency connection
- › Warehouse control



### Processes



# Innovations – SAP S/4HANA EWM

## Latest trends and technology



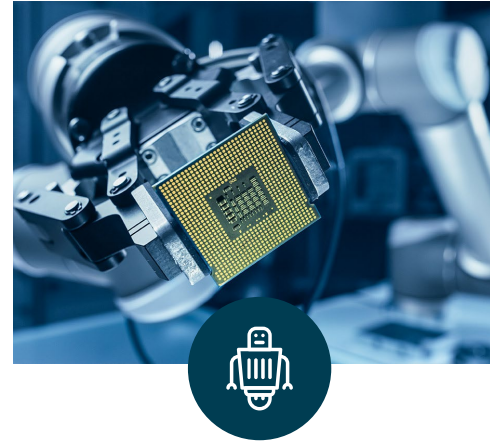
### Inventory real-time transparency and control

- › Real-time analytics
- › Transparency thanks to fully digitized processes
- › Inventory reduction



### Intelligent Enterprise – optimization on-the-fly

- › On-the fly optimization based on current workload
- › Reduction of lead times
- › Increase of picking performance



### Digitization to be fit for the future

- › Integration of different technologies and suppliers e.g.
  - › Autonomous vehicles
  - › Robotics



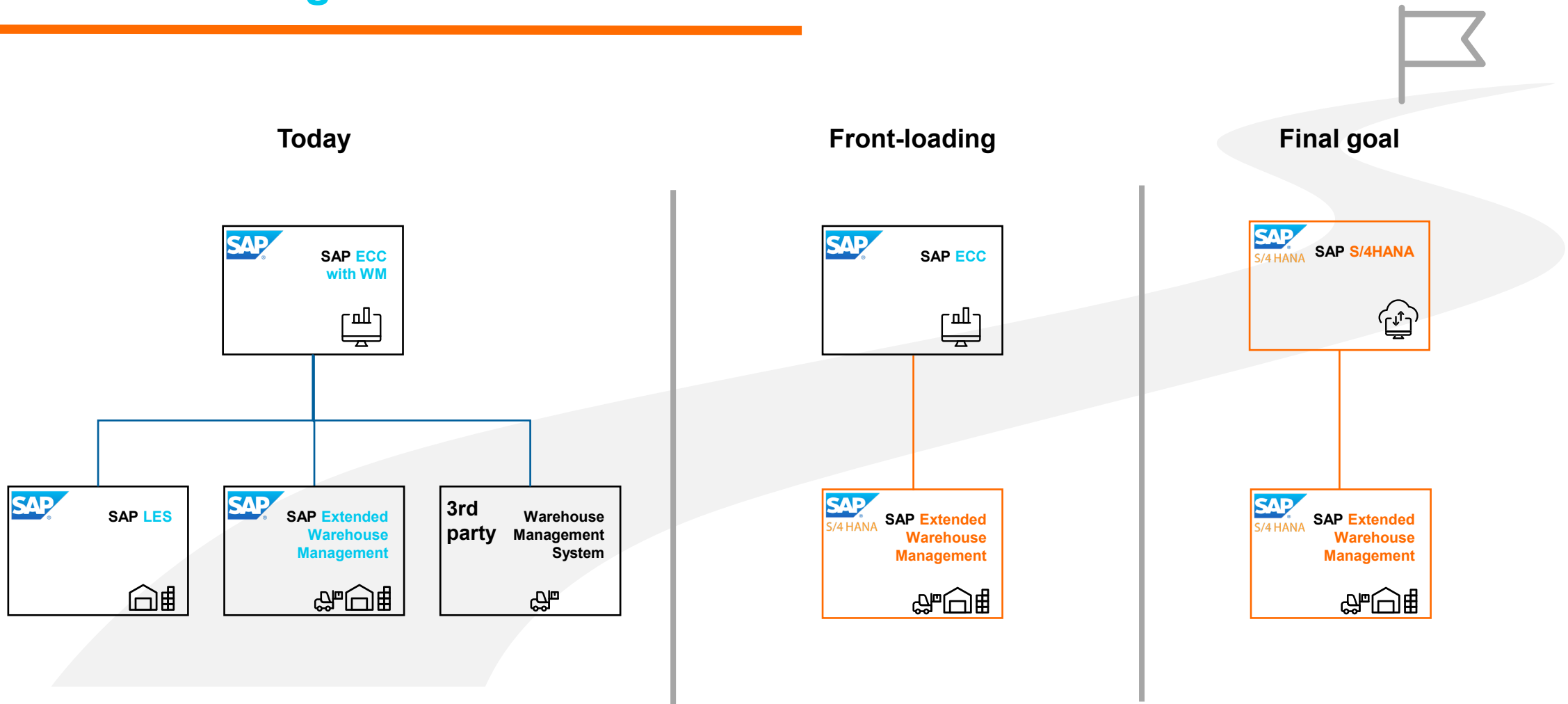
### Connected and resilient supply chain

- › Integration into SAP transportation management
- › Global track and trace
- › Block chain technology
- › Open and connected ecosystem enabled via APIs



# SAP S/4HANA transformation

## Front-loading with decentral S/4HANA EWM





# Front-loading – What's in it for you?

- › Mitigate risks
  - › **Business critical process** warehousing already on S/4HANA
  - › Gain experience with the new SAP S/4 Basis and HANA database technology to **secure operations**
- › Leverage supply chain innovations
  - › **Connect** your supply chain by using **APIs**
  - › **On-the-fly optimization** with side-by-side technology e.g. SAP WH insights cloud solution
  - › Integrate **cross-supplier** robotics

# Your contacts at 4flow

---



**Ralph-Michael Schmidt**  
Partner  
+49 162 416 0058  
r.schmidt@4flow.com



**Oliver Bürger**  
Principal  
+49 162 415 9098  
o.burger@4flow.com

**Headquarters**  
4flow  
Hallerstrasse 1  
10587 Berlin  
Germany  
+49 30 39740-0

[www.4flow.com](http://www.4flow.com)

**4flow on LinkedIn**



You can find current news  
and developments on  
LinkedIn.



# 4FLOW

Your supply chain solution

[www.4flow.com](http://www.4flow.com) | 4flow on LinkedIn 