

stow 

we
rack
the
world.

STOW GROUP

9

Production
facilities

+400.000 t

Annual steel
production

Leading
in rack supply

HQ

located in
Belgium

Automation
for pallets and totes

+250

Distributors
worldwide

+1B EUR

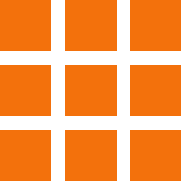
Revenue

+2.000

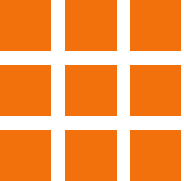
Rackstars

15

sales entities
worldwide



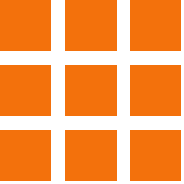
EVOLUTION



**Stacker
Cranes**

**Shuttle
Solutions**

**Progressive
Technologies**



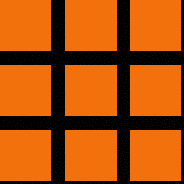
- **Engineering intense**
- **Performance not adaptable**
- **Restricted redundancy**
- **Long installation and commissioning phase**
- **Complex service tasks**

**Progressive
Technologies**

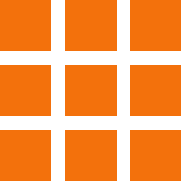


VOLATILITY



A black and white photograph of a line of white Stormtrooper minifigures. The figures are arranged in a perspective line, with the one in the foreground being the most detailed and in focus. The background is dark, and the overall tone is monochromatic.

EMPLOYEES



- **Engineering intense**
- **Performance not adaptable**
- **Restricted redundancy**
- **Intense installation and commissioning phase**
- **Complex service tasks**

- **Minimal engineering**
- **Fast to set up**
- **Easy scalable**
- **Low costs**



Progressive

Technologies

SIMPLICITY

FLEXIBILITY

VELOCITY



WHEN E.SCALA?

High density
solutions

e.scale

High
performance
solutions

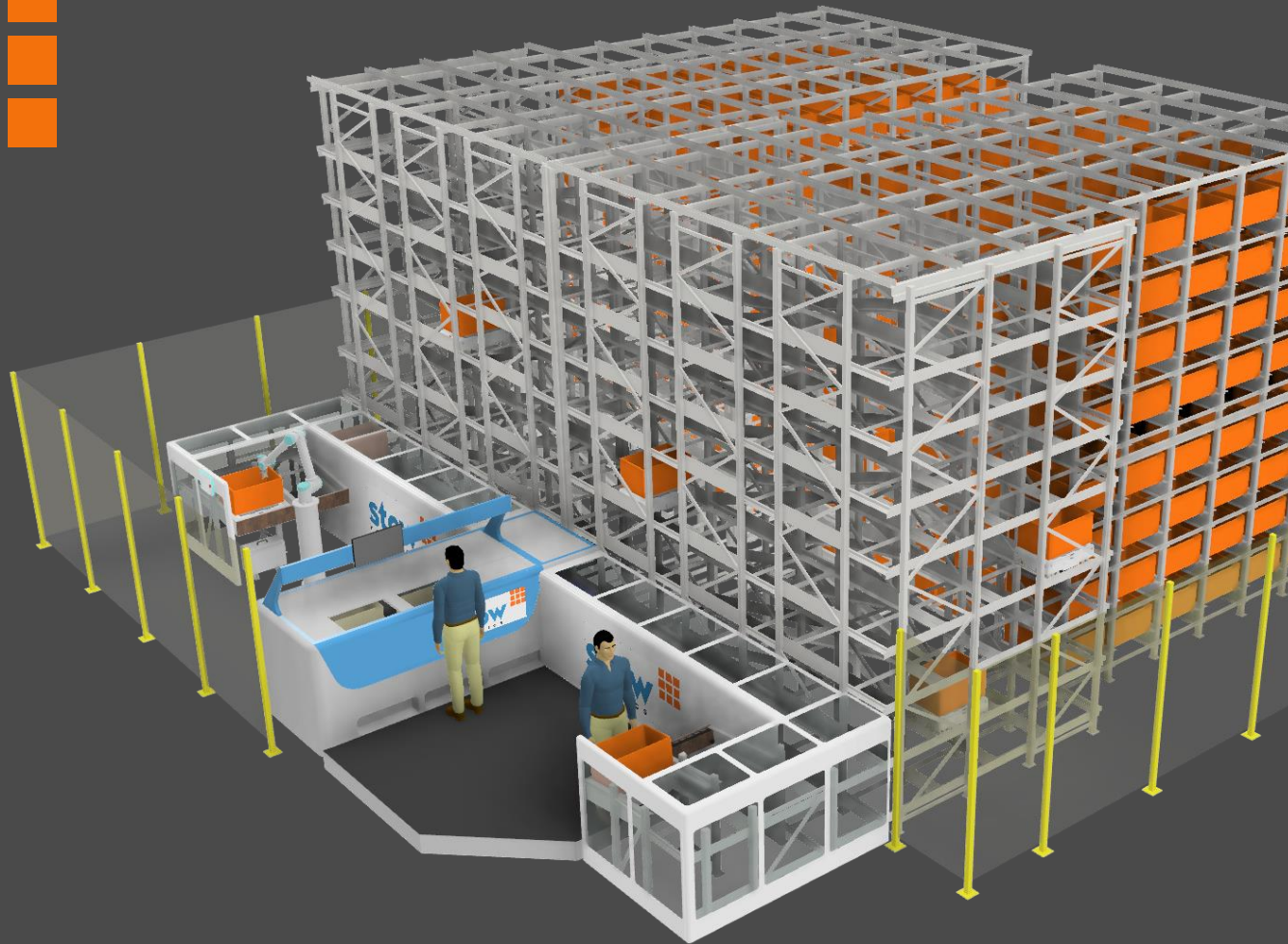


PARKING HOUSE

Up and down
over **ramps**

Multiple
routes to
every point the
system

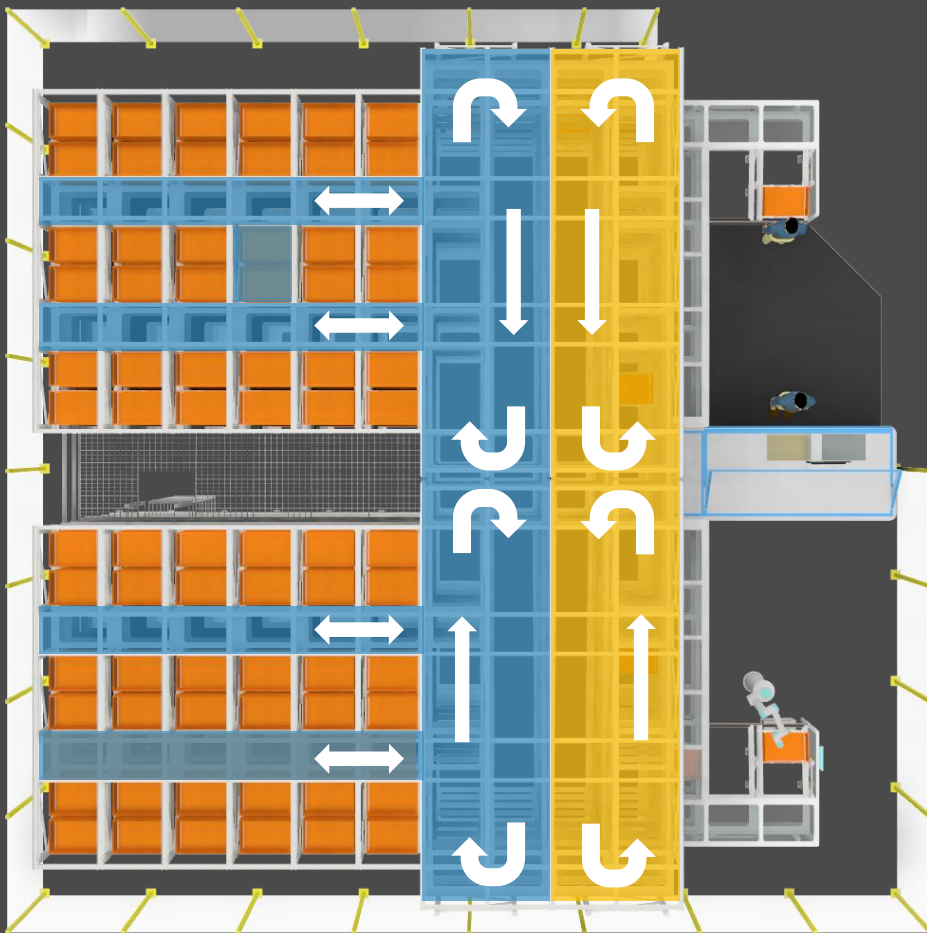
Scalable in
throughput,
capacity and
functionality



Simply no
wires, lifts and
conveyors in the
entire system

Tolerant to
changes in
ABC structure

Keep your own
Totes



Density

variable from single to multideep storage

Redundancy

with multiple routs to every storage location

Sequencing

included on multiple points within the system

STRAJENI BICATLYA

