

# 5G Konnektivität in der Logistik

Teleoperiertes Fahren – Die Zukunft der Logistik

Oktober 2023



# Bringing Together Cellular Technology Leaders

CARRIER-FOCUSED

ENTERPRISE-FOCUSED

**ERICSSON** 

Leading the way in 5G infrastructure deployments

+

  
**cradlepoint**

Industry's first '5G for Business' solutions

**Cellular infrastructure**

**180** Countries around the world

**70%** Of the world's top carriers

**2.5B** Users from 2G to 5G

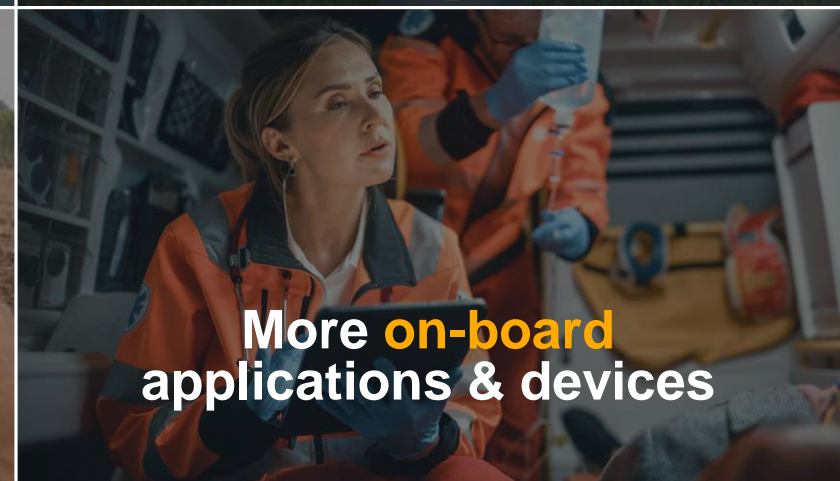
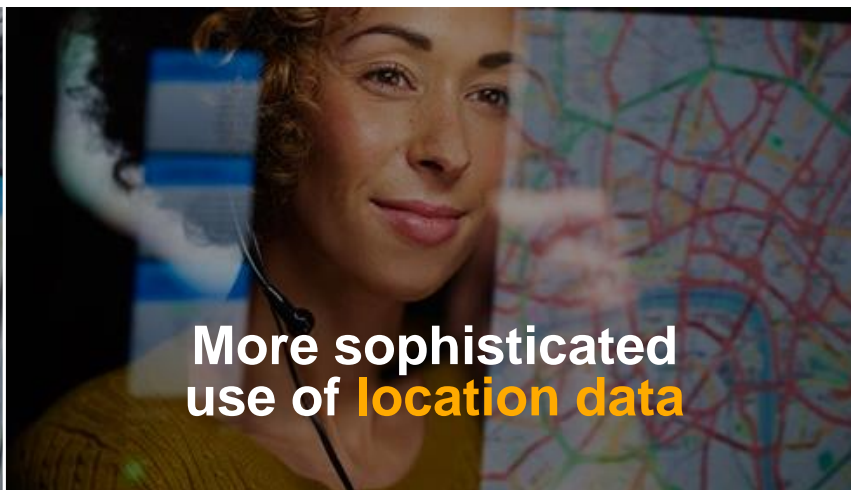
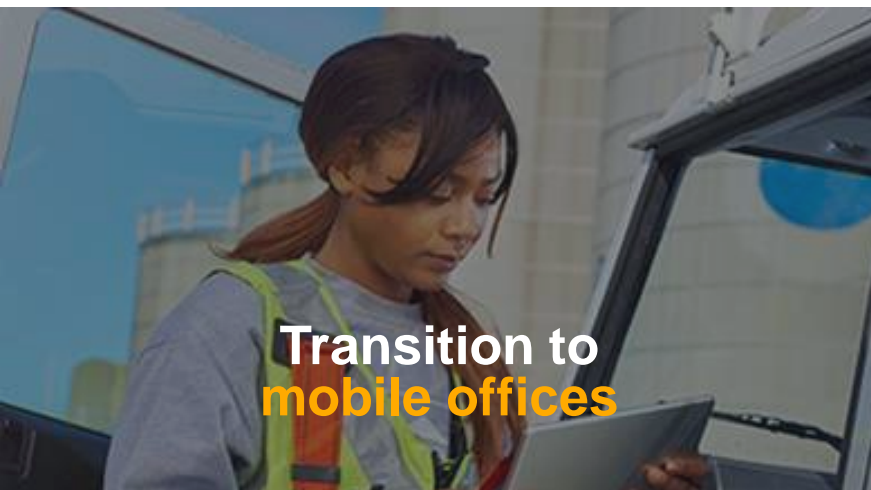
**Cellular endpoints**

**4.5k** Public safety agencies

**36k** Customers

**2M+** Subscriptions

# The New Era of Transportation Connectivity





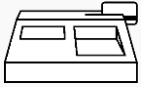
# The New Era Looks Like This



AVL / telematics



Wifi



Fare box



Tablet



Digital signage



Video surveillance



Digital video recorder



Mobile data terminal



# The New Era Looks Like This



## Autonomous & Teleoperated Driving





# MIRA GmbH

*We enable driverless mobility –  
with Teleoperation.*

**mira**





# The Future of Mobility is **AUTOMATED** and **DRIVERLESS!**

*Numerous benefits are associated  
with **automated driving**:*

- ❖ *Traffic reduction in urban areas*
- ❖ *Better use of urban spaces*
- ❖ *Gain comfort for individual customers*
- ❖ *Less emissions*
- ❖ *More efficient logistics processes*
- ❖ *Less labour costs*
- ❖ *Less accidents*





**However...**



# ...full automated driving does not work yet (and maybe never will)!

**Automotive News** SUBSCRIBE ACCOUNT LOGOUT

Home > Mobility Report

### Cruise robotaxis block traffic for hours in San Francisco

The traffic jam, which a witness estimated involved more than a dozen of the robotaxis, was not resolved until human operators removed the vehicles

July 01, 2022 03:18 PM | 16 HOURS AGO

DREW GORETZKA

Automotive News Europe

HOME FEATURES OPINION PHOTOS PODCASTS CAR CUTAWAYS EVENTS MORE

Home > News Analysis


September 13, 2022 05:11 AM

### Truly autonomous cars may be impossible without helpful human touch

Truly autonomous cars may be impossible without permanent remote human supervisors.

Reuters

TWEET SHARE in SHARE EMAIL PRINT



THE WALL STREET JOURNAL

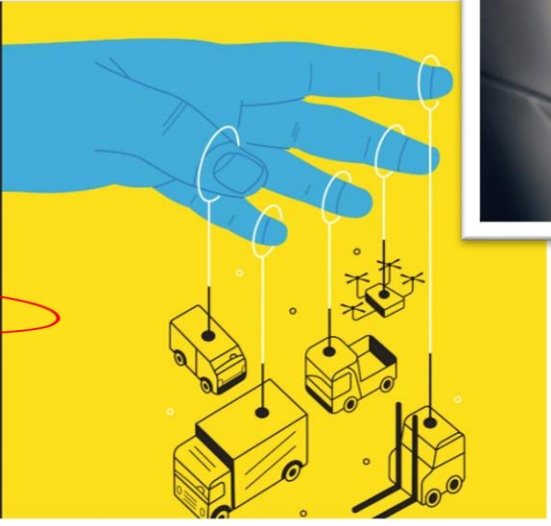
English Edition | Print Edition | Video | Podcasts | Latest Headlines | More

Home World U.S. Politics Economy Business Tech Markets Opinion Books & Arts Real Estate Life & Work Style Sports

### THE FUTURE OF EVERYTHING

## Autonomous Delivery and Work Drones Will Still Need a Human Minder

Development of autonomous technologies is attracting billions of dollars, but industry executives say remote operators will likely always be needed



<https://www.aut...>

# Automated driving has real limits



## Edge Cases

- ❖ Road Blocks & Diversions
- ❖ Adverse Weather
- ❖ System Failures



## Legal Requirements

**Human Supervision** required by Law (e.g. "Technical Supervision" required in Germany)



## Use Cases that cannot be automated

e.g. Non-repeatable driving tasks such as **Rescue Missions, Fire Fighting, Policing**



**Our solution -**

# HUMANS monitor and operate driverless cars remotely via mobile networks

*The result: All the benefits of driverless mobility.  
Not in five or ten years time –  
**NOW!***





**We see two  
basic use cases -**

# Teleoperation for...

## ...Non-self-driving Vehicles (SAE Level 1-3)



**e.g. Rental and Sharing fleets:**  
Teleoperated delivery and pick-up of vehicles



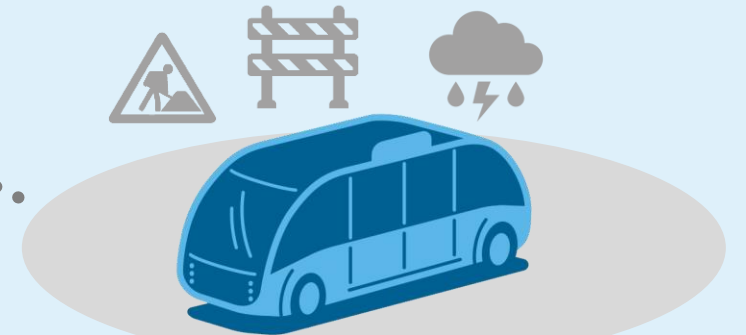
**e.g. Truck fleets:**  
Teleoperated short haul operation of trucks



## ...Self-driving Vehicles (SAE Level 4 & 5)



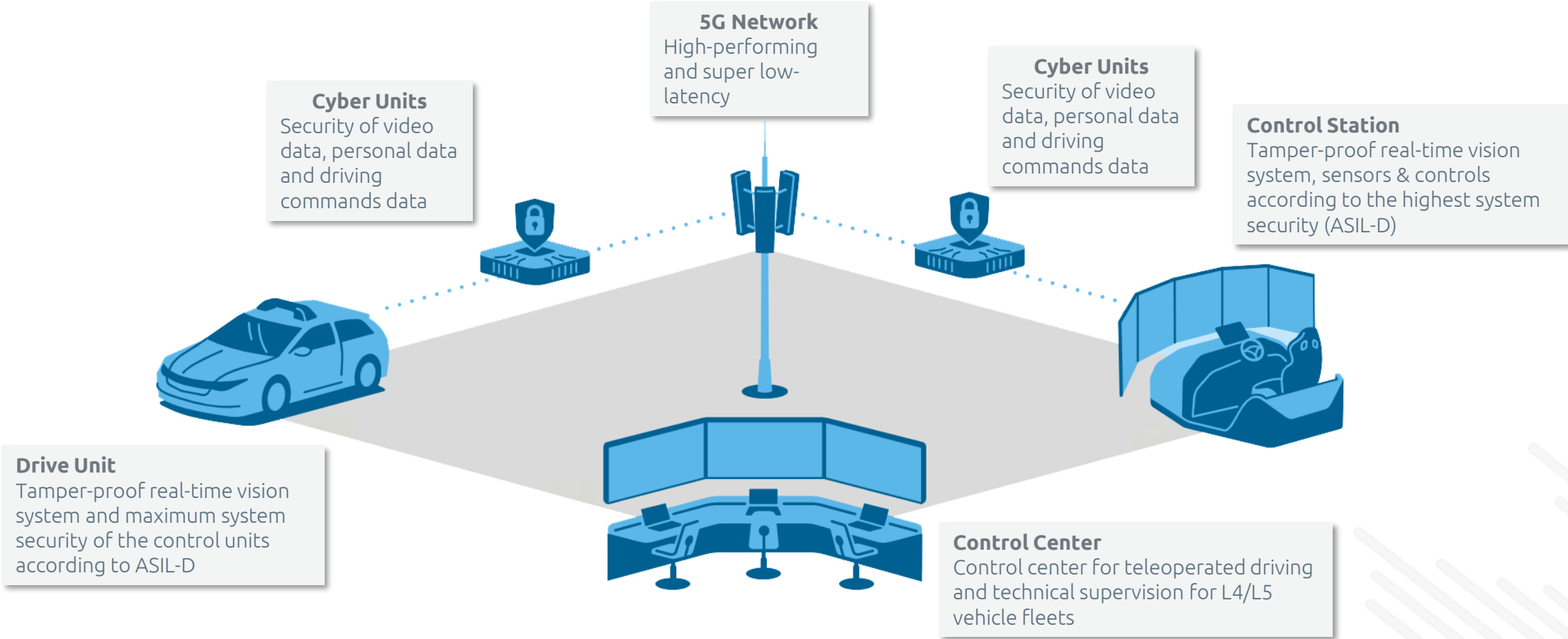
**Route section-specific:**  
A teleoperator takes over and remotely drives a logistic vehicle on first & last mile



**Case-specific:**  
A teleoperator intervenes and assists driverless L4/5-vehicles in edges cases



# Core components and system architecture



# OUR TRACTION: We're on the road since July 2022, more ODDs to be launched within next 12 month

Operational since July 2022



## Living Lab I: Industriehafen Düsseldorf

*First rollout of a teleoperated vehicle under **real-life conditions on public roads***

Q1/2023



## Living Lab II: Bonn-Beuel

*Testing of various use cases e.g. **on-demand staff shuttles** (in cooperation with Deutsche Telekom AG)*

Q4/2023



## Living Lab III: Location t.b.c.

*Project start **Hub2Production** on public roads with partner incl. further use cases*



[www.mira-mobility.com](http://www.mira-mobility.com)

---

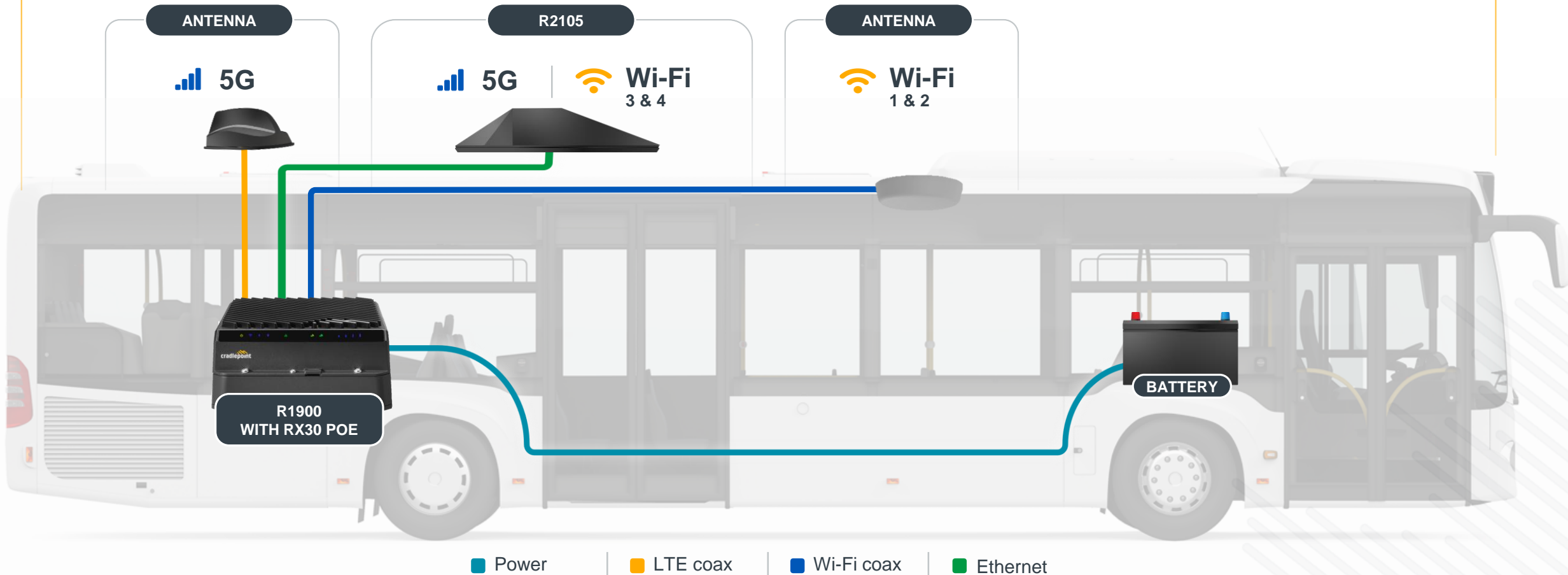
Follow us on LinkedIn



# Hardware and Technologies

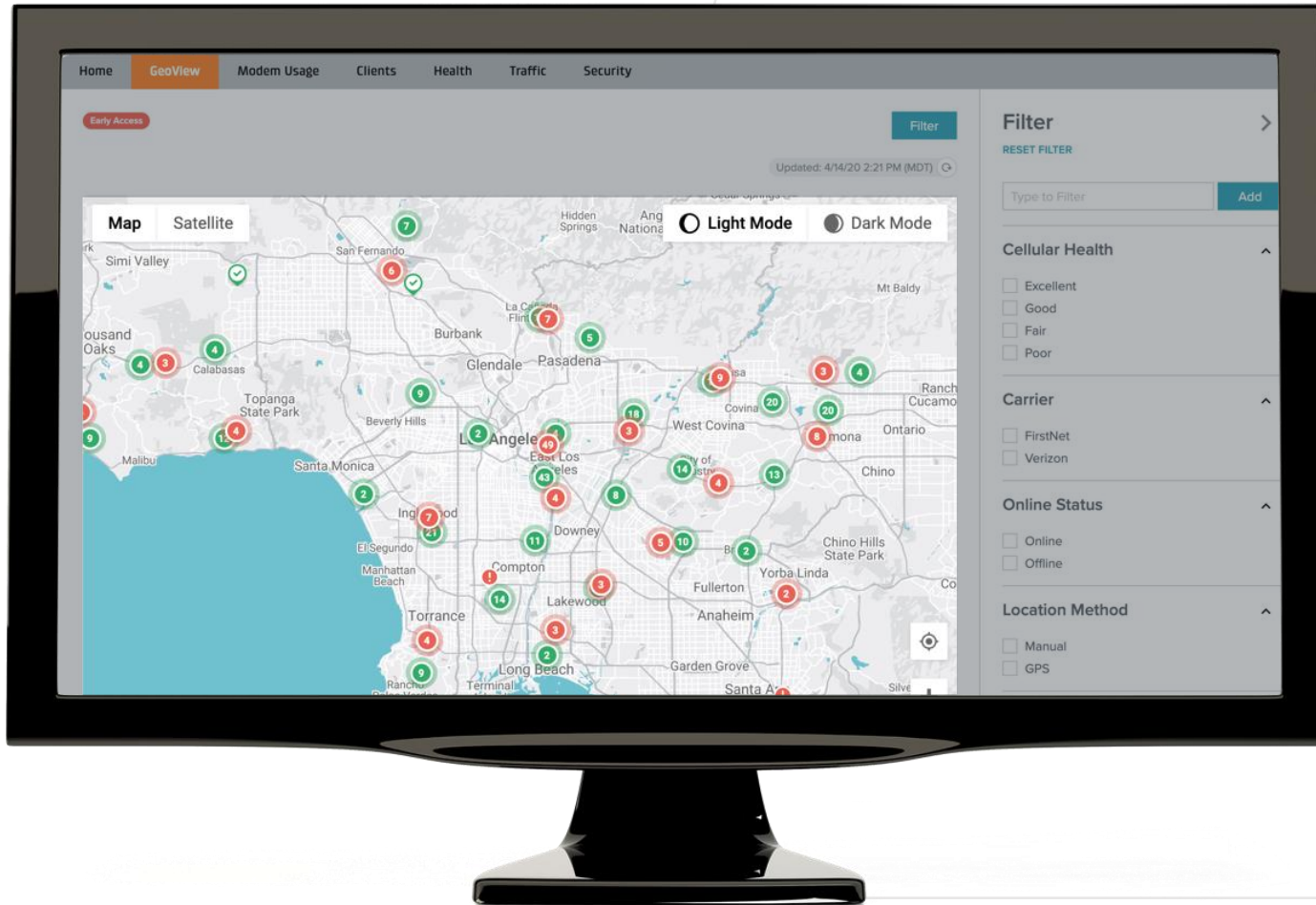
# R2105 Captive Modem - Dual 5G + Multi Wi-Fi

Quad Wi-Fi Radio





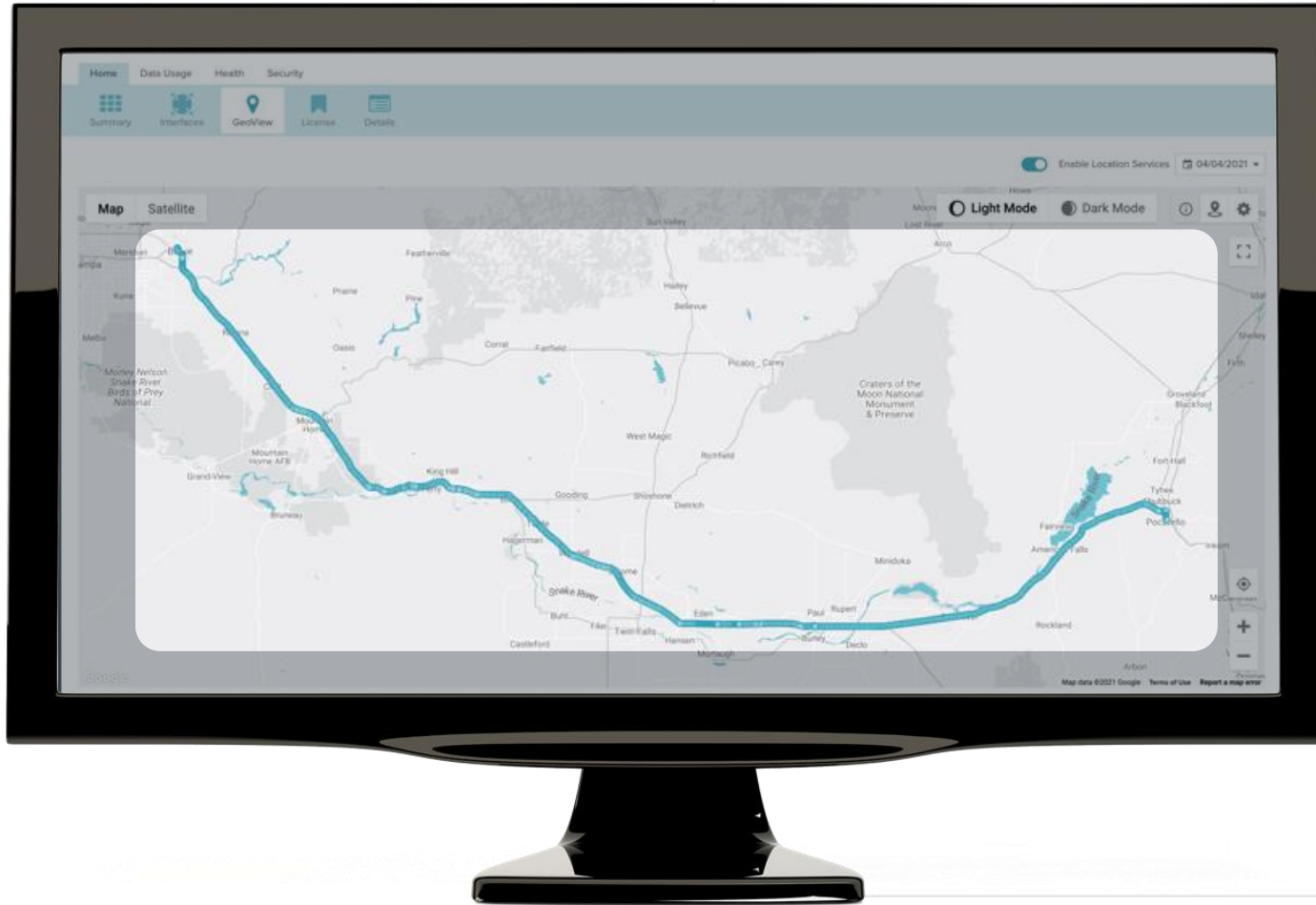
# GeoView Real Time Tracking



## FILTER BY

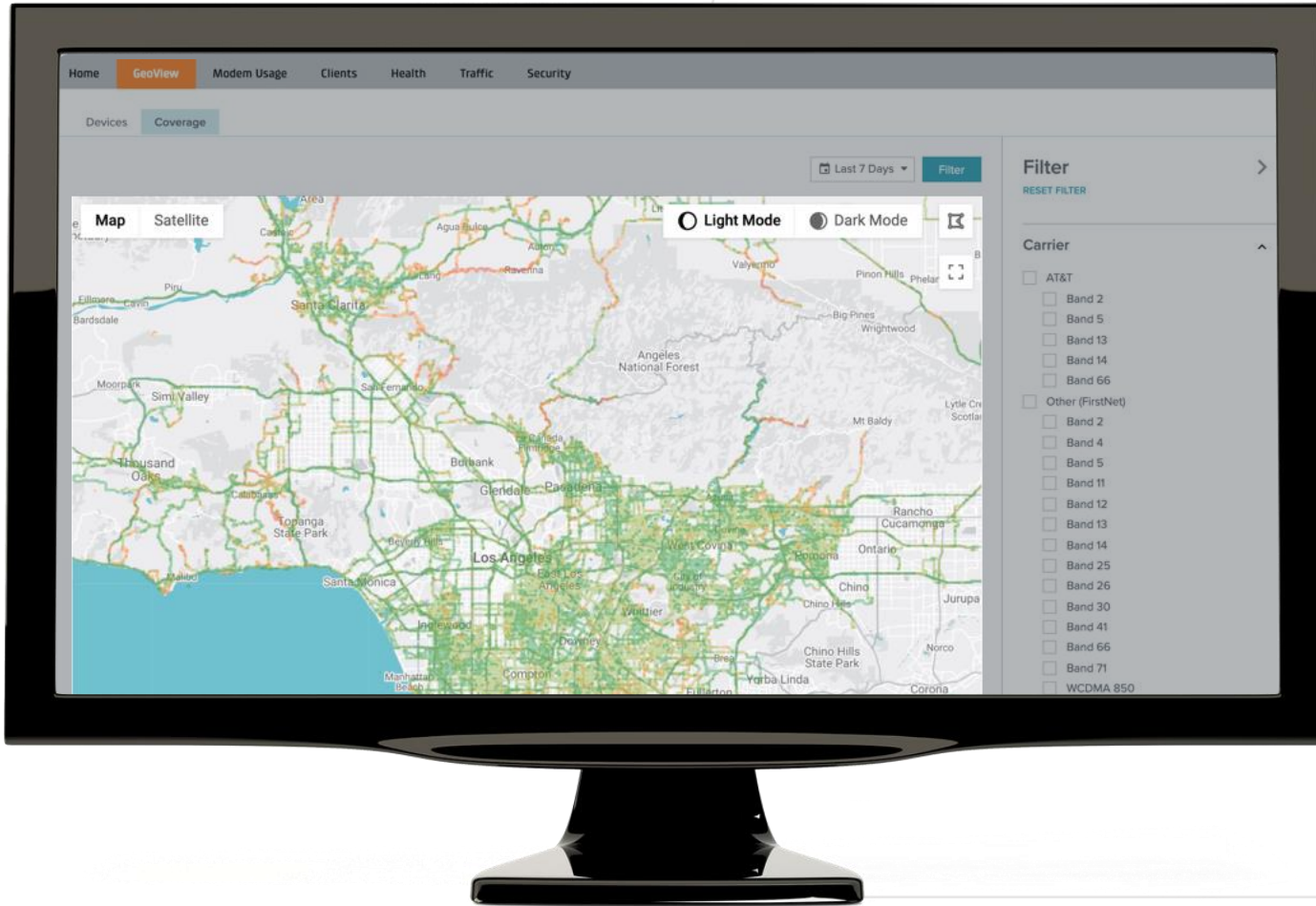
- Device type
- Cellular health score
- Carrier
- Online status
- Location method

# Historic Location Tracking



- Ability to track historic device location
- Enables additional LTE/5G troubleshooting capability for locating poor coverage areas
- 365 days data storage

# Coverage Map



- Utilizes location tracking data points to create coverage map
- Helps identify coverage gaps
- Filter by health, band and carrier
- Troubleshooting aid





cradlepoint

mira

**Vielen Dank**

